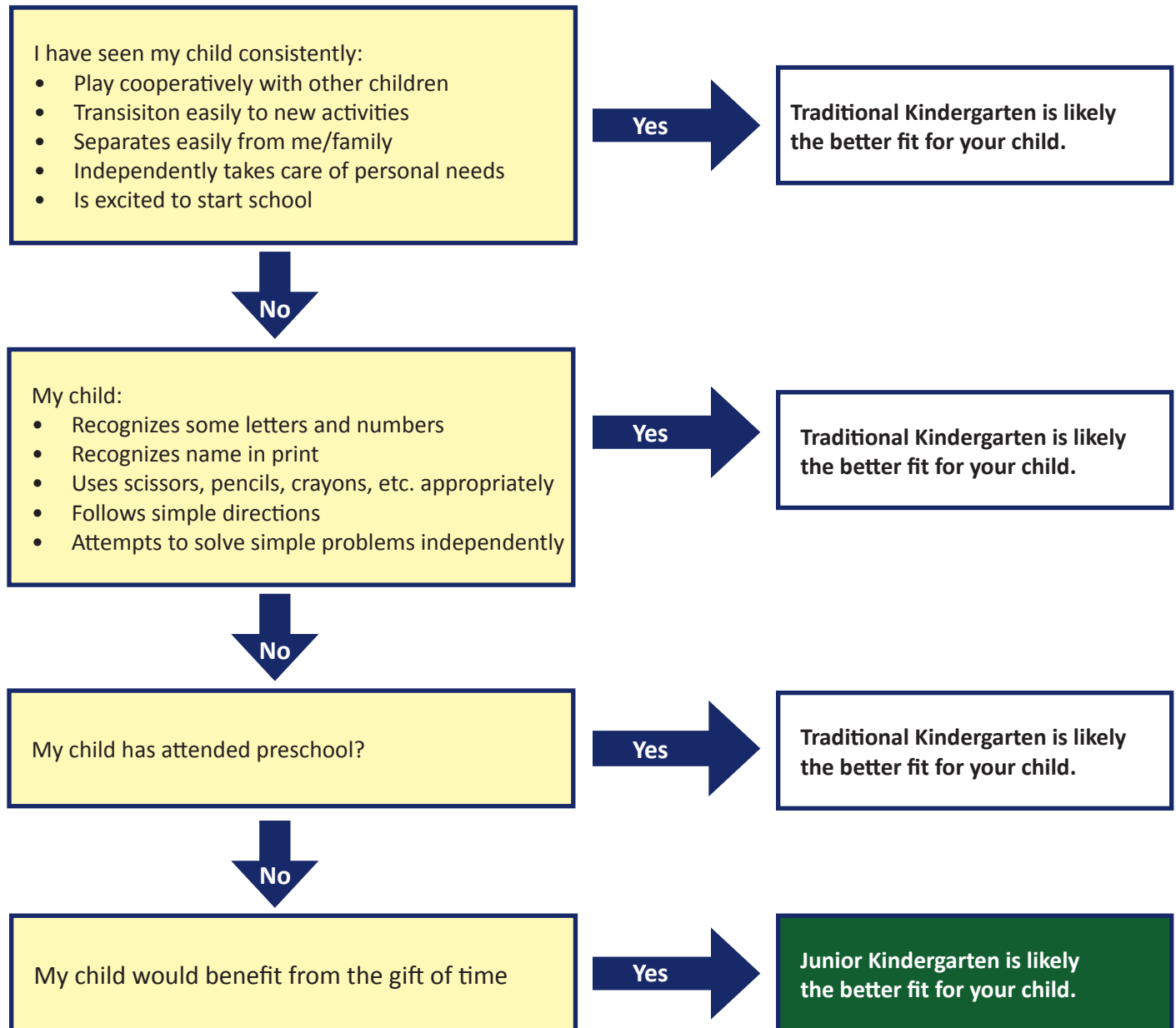




## Whats the best placement for my child... Junior Kindergarten or Kindergarten?

Lamphere Schools understands the need to provide choices for families making decisions about the best fit for their Kindergarten eligible child. Making thoughtful decisions about placement helps ensure a successful school experience and a strong foundation from which to grow.



### What other options might be available?

- Lamphere Schools Early Childhood Education program presents a variety of preschool offerings. For additional information, please contact Jan Figurski (248) 589-3753
- Great Start Readiness Program is a state-funded preschool program for income eligible four year old children. For additional information, please contact Jan Figurski (248) 589-3753